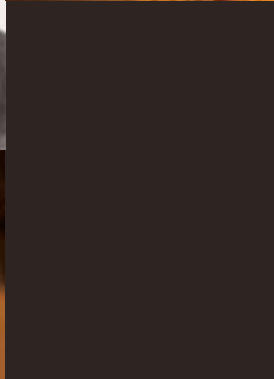
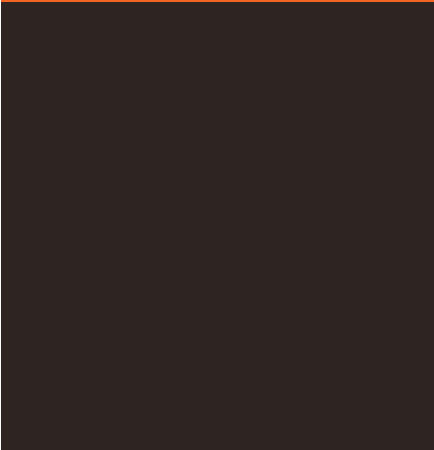
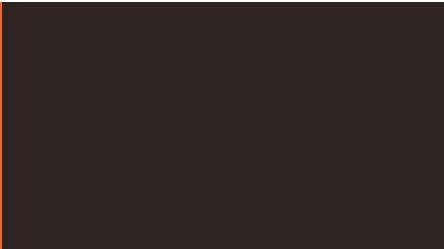




architecture & design





*A mind, like a home, is furnished by its owner,
so if one's life is cold and bare he can blame none but himself.*

Louis L'Amour

NMC - These days, we all aspire to have a home with an interior design that reflects our personality and we all have our own particular ideas about decoration. To help you to customise your interior, NMC – the international leader in decoration – has created a whole collection of mouldings, skirting boards and picture rails in synthetic foam. Both easy to apply and having an inimitable finish, these high-quality, innovative products naturally meet the strictest technical demands and the highest standards.

ARCHITECTURE & DESIGN - These decorative profiles have been designed to be functional under all circumstances, and they can be moulded to your requirements in terms of style, in every range you can imagine. Alongside the traditional mouldings and skirting, why not try a ceiling rose, picture rail and other finishing touches to add a bit of character to your walls? You will see in the blink of an eye, your home immediately starts to look more personal!

Sara & Peter

Hamburg



Interior Designer : Alain De Poitre
Stylist-Interior Decorator : Dominique Gringoire

ESSENZA – For a long time, we had been wondering how to achieve that minimalist look that we dreamed of, featuring beautiful symmetries. Our architect and our designer came up with the solution together: synthetic foam cornices and skirting. They really show off the proportions of the rooms and create lighting effects which strike a balance between warm and cooler materials. A successful example of essentialism!



Essentialism therefore leads quite simply to harmony
between people and the space in which they live.

Alain de Poitre



01 WALL T L WT 02 WALL T L WD 03 A T L 04 L T L D 05 L T L D









01

01

04



02

03

01 WALL T L WT
02 WALL T L WD
03 A T L
04 L T L D

Kristel & François

Brussels



Stylist-Interior Decorator : Dominique Gringoire

PROFESSIONALS – François and I are both physios and we have our practice in our home. When we came to redecorate, we wanted to devote the same care to our working environment as to our private quarters. We wanted a welcoming and resolutely human atmosphere. The mouldings helped us to produce that effect and create a link between the two areas of our lives.





02

01

02
01



01

01

03

04

01 WALL T L WL 02 A T L 03 L 04 L T L L T L L

*A home is not a mere transient shelter:
its essence lies in the personalities
of the people who live in it.*

H. L. Mencken





01 A T L 02 A T L 03 WALL T L WL 04 L T L L 05 L T L L





Human beings, by changing the inner attitudes of their minds,
can change the outer aspects of their lives.

William James





Pierre

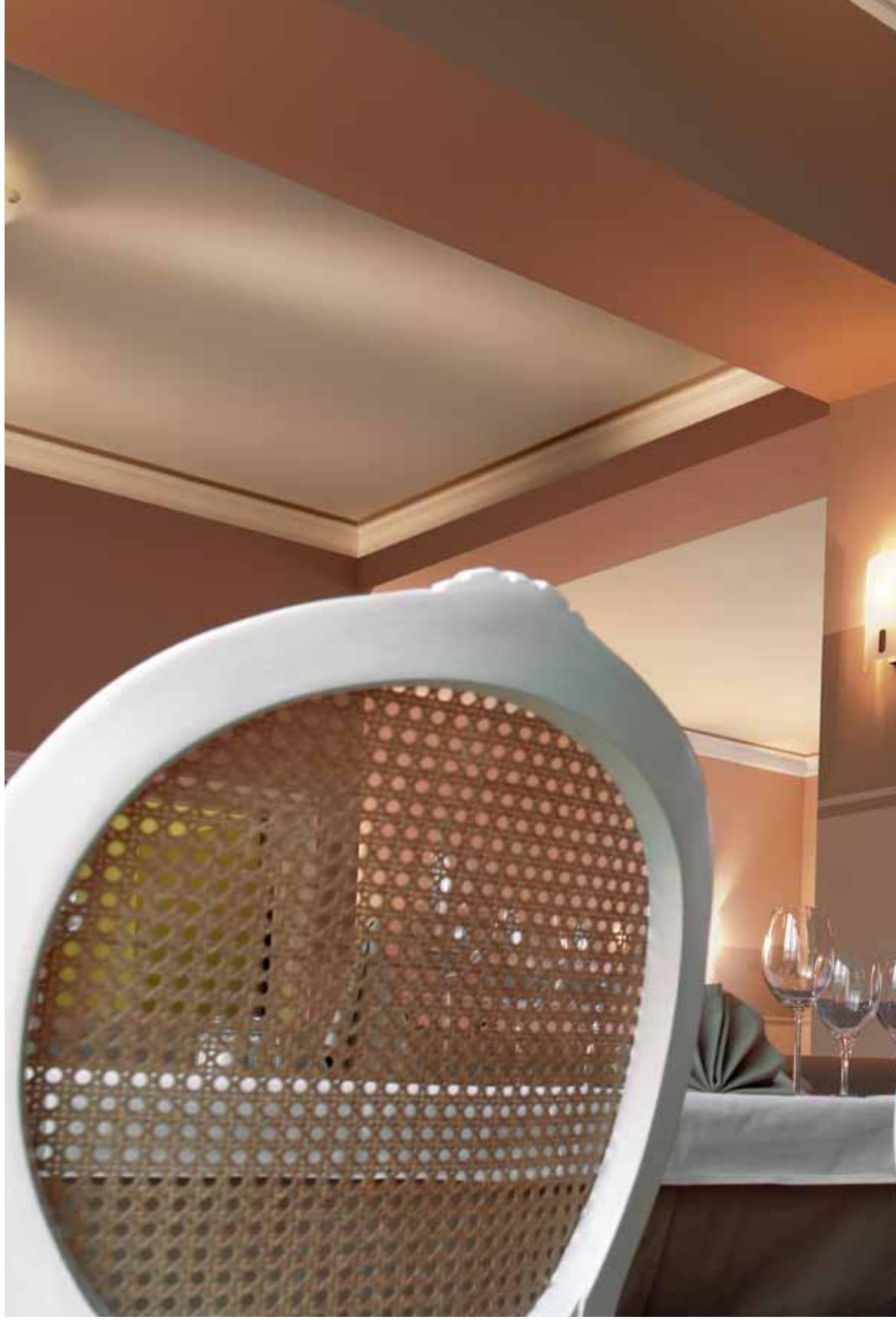
Geneva



Stylist-Interior Decorator : Pierre Goldberg

CHEF – When you love your job, you throw yourself into it heart and soul and that helps you to build up a loyal clientele. The challenge then is to avoid monotony. That is why I redo my menu quite often, but also the decoration of the restaurant! But I do tread carefully, because the atmosphere needs to be as refined and creative as the dishes I cook and obviously, quality products! These mouldings fit the bill perfectly for me and mean that I can redecorate regularly without too much upheaval.







01

02



*Design is directed toward human beings.
To design is to solve human problems
by identifying them and executing the best solution.*

Ivan Chermayeff



Susanne, Michael & Léa

Paris



Stylist-Interior Decorator : Martine Groetaers

COCOON – Since the birth of Léa, we wanted to make our little nest feel even warmer and more protective. These mouldings and skirting's meant that it was child's play and we are getting even more enjoyment from 'cocooning' with baby and strolling from room to room...





*A man travels the world over in search of what he needs
and returns home to find it.*

George Moore















*The most important work
you and I will ever do
will be within the walls
of our own homes.*

Harold B. Lee



Gaëlle

London



Stylist-Interior Decorator : livier Bridoux

POP – I never do anything like other people and obviously, my look is very important to me, as is the look of my apartment. I wanted it to be vibrant, wacky, and a bit edgy, like me! I think I've succeeded...







01

MA T L TI

02 WALL T L WL

03 L

T L L





*Mid pleasures and palaces
though we may roam,
Be it ever so humble,
there's no place like home.*

John Howard Payne



01

MA T L TI

02

MA T L AT

03 A T L

04

L T L L





OVER TO YOU – Like Susanne, Peter, François or Gaëlle, why not ask your painter, fitter or interior decorator for help and advice on fitting your mouldings, whether at home or at work.

Our internet site www.nmc.eu/architecture-design carries a list of your local official NMC distributors, they will show you our different collections and put you in touch with professional fitters if necessary.

www.nmc.eu/architecture-design

